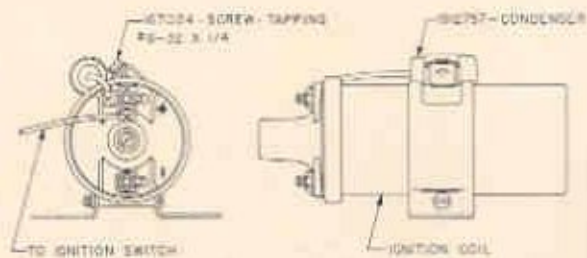
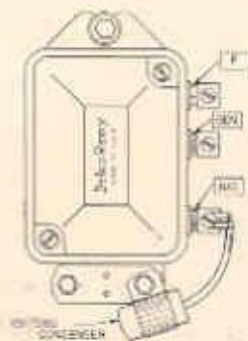
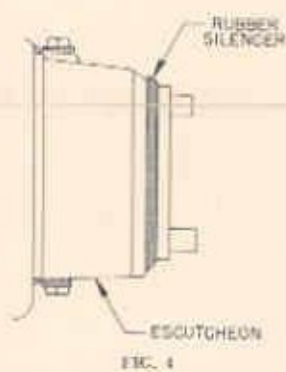
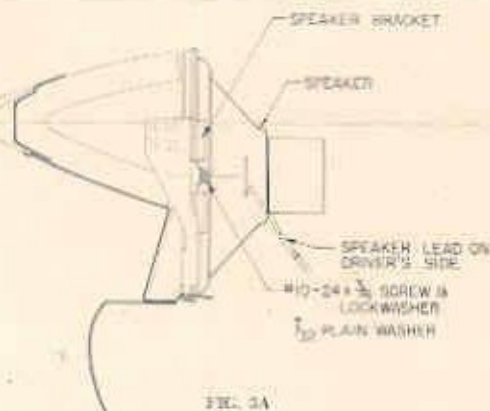
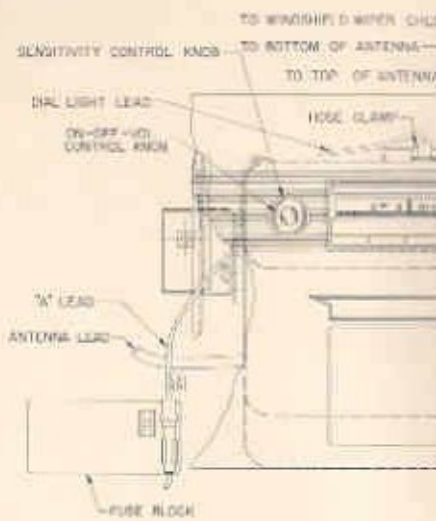
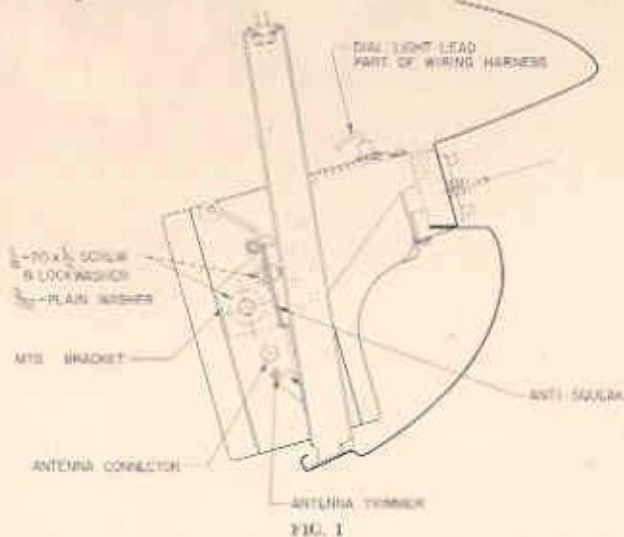


INSTALLATION INSTRUCTIONS

CADILLAC RADIO 7265825 AND 7265845

IN ALL 1955 CADILLAC CARS

1. Remove the radio control opening cover.
2. The speaker is installed in all cars at the factory. See Figs. 3 and 3A for mounting location.
3. Assemble the right angle mounting brackets and the anti-squeak to the mounting brackets in the car using the plain washers, screws and lockwashers. Fig. 1 and 2.
4. Assemble the rubber silencer around the dial escutcheon. Fig. 4.
5. Connect the vacuum antenna hoses to the nipples on the top of the receiver, following the instructions which accompany the antenna and insert hoses under hose clamp on top of radio receiver. Fig. 2.
6. Unfasten the dial light lead which is part of the wiring harness on the car. Remove and discard the plug in the socket. Insert the dial light into the socket and the socket into the opening in the top of the receiver.
7. Assemble the nylon spacers on both the right and left control bushing. Figs. 5 and 6, and install the radio with the control bushings extending through the instrument panel. Figs. 1, and 2.
Assemble the control escutcheons marked "Tone" and a hex nut tightly on the right control bushing and the control escutcheon marked "More Stations" and a hex nut tightly on the left bushing.
NOTE: The control escutcheons have locating pins on the back side which must fit in the matching holes in the instrument panel. Figs. 5 and 6.
8. Assemble the plain washers, screws, and lockwashers through the positioning bracket to the receiver. Tighten the screws to the mounting brackets in the car then pull the radio case firmly towards the grille and tighten the positioning screws to the receiver. Figs. 1 and 2.
9. Assemble the tone control knob, the spring and a control knob on the right shaft. Fig. 5. Assemble the sensitivity control knob, the wave washer, and a control knob on the left shaft. Fig. 6.
10. Connect the "A" lead (black) of the radio to the fuse holder as shown in Fig. 2.
11. On all models except convertibles connect the rear seat speaker lead to the Douglas connector from the wiring harness. This connector is located above the glove box compartment. Fig. 2. *NOTE: Convertible models do not have the rear seat speaker connection.*
12. Insert the antenna lead into the socket on the left side of the radio. Fig. 1.
13. Insert the lead from the front speaker into the front speaker socket. Figs. 2 and 3A.
14. **TURN RADIO ON. EXTEND VACUUM ANTENNA. SET VOLUME CONTROL AT MAXIMUM. SET SENSITIVITY CONTROL AT MAXIMUM (ALL THE WAY CLOCKWISE) TUNE IN A WEAK STATION BETWEEN 800 AND 1000 KC AND ADJUST THE ANTENNA TRIMMER FOR MAXIMUM VOLUME. NOTE: IF DURING ADJUSTMENT STATION BECOMES STRONG TUNE RADIO TO WEAKER STATION AND CONTINUE ADJUSTMENT.**
15. Install the front wheel static collectors in the hubs of the front wheels. Bend the cotter pins around the nuts to prevent interference with the collector. Fig. 7.
16. Install the voltage regulator condenser as shown in Fig. 8.
17. Install the ignition coil condenser. Fig. 9.
18. Install the generator condenser. Fig. 10.
19. Check the operation of the radio to be sure the installation is satisfactory.
20. Set the five favorite station selector buttons as follows: Fig. 11.
 - A. Open the hinged door below the dial exposing the selector tabs.
 - B. Tune to the desired station adjacent the left end of the dial.
 - C. Move the first selector tab (one farthest left) until it lines up with the pointer tip.
 - D. Repeat set up steps B and C for the four remaining selector tabs choosing stations from left to right on the dial.
 - E. Check the setting of each selector tab by depressing the corresponding station selector button and allowing the desired station to be tuned in. If the correct station is not found in, readjust the selector tab.
21. The station selector bar must be depressed to release any push buttons before the foot switch can be used.



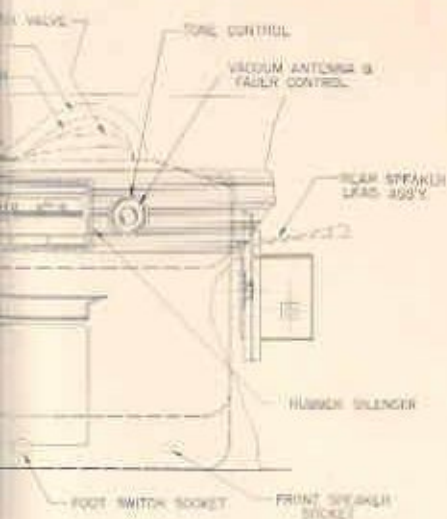


FIG. 2

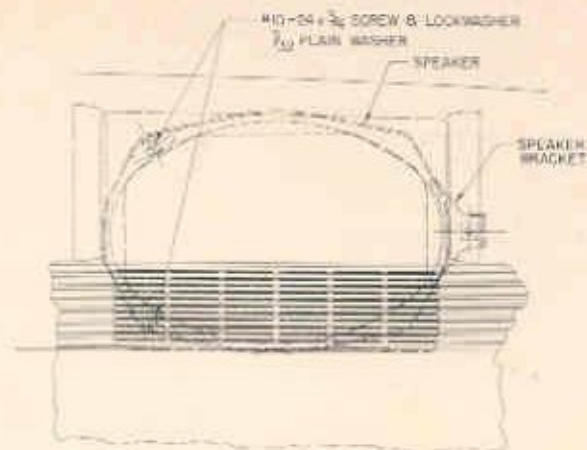


FIG. 3



FIG. 4

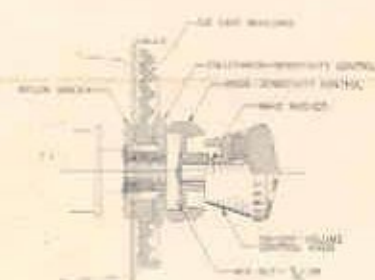


FIG. 5

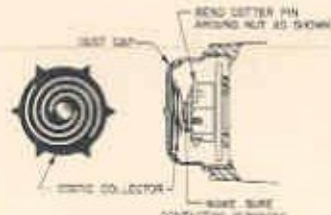


FIG. 6

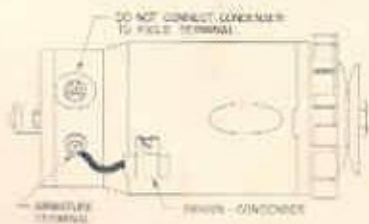


FIG. 7

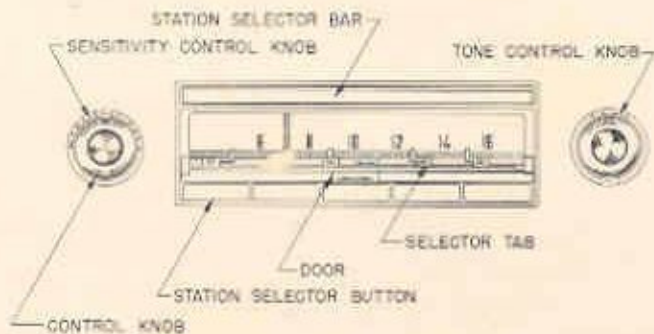


FIG. 8